

Dee Marathon 2018

Highland Series 3

Sunday 28 October 2018

The Highland Series is a club & individual competition that is spread over the 3 Highland Marathon competitions that are held throughout the season. The Dee Marathon is the last in the series and will be held 28 October 2018.

There is also a new inter club competition for local kayak clubs. Points will be awarded per competitor, with additional points for 1st, 2nd and 3rd places.

The Dee Marathon is open to all paddlers in any type of canoe or kayak (e.g. K1, K2, Single or double Sea Kayak, Slalom, WWR, General Purpose Plastic, single or double Canadian Canoe or SUP). You can race or you can just enjoy a nice day out on the river.

The Dee marathon is also a BCU Ranking Event. Divisions 1, 2 & 3 competing over the Long Course, and Divisions 4, 5 & 6 on the Short Course. Unfortunately due to a clash with a rowing regatta we are not able to offer racing in Divisions 7, 8 & 9 this year.

Race Information

Due to a clash with a weekend rowing event at ABC, we have had to move the event earlier, and concertina the timings to allow both events to go ahead. Please therefore arrive promptly and work with us on this occasion to help things run smoothly. Obviously ABC will be busy, but we will be using it while the rowers are racing so hopefully not too bad. Parking will be at a premium and it may be necessary to park on adjacent streets or at the arches on the N side of the road bridge.

We have a new registration and start location at the football field at Maryculter – see map below. The long course start is still at Drumoak, but there will be no facilities there. Competitors will just unload and go straight on the water. The race timings are such that unless you have a driver, long course car shuttles will need to be done after the event. Organisers will transport a gear/clothes bag to the finish if required.

There is ample parking at the new registration area at Maryculter. Access to the river for short course competitors is through the gate on the N side of the original bridge on the downstream side. Note that this necessitates carrying boats across a busy road, so please be careful.

Long Course – 20 km

All categories except slalom and play boats.

Divisions 1, 2 & 3 for paddlers participating in the BCU Ranking Event.

Start at Park Bridge Drumoak, finish Aberdeen in front of Aberdeen Boat Club.

Short Course – 11.5 km

All categories.

Divisions 4, 5 & 6 for paddlers participating in the BCU Ranking Event.

Starts at Maryculter bridge, finish Aberdeen in front of Aberdeen Boat Club.

Registration

The registration for long and short courses is at Maryculter Bridge, the start location of the Short Course.

Entry fees £10 for the Long and Short Course, which includes soup and use of shower facilities at Aberdeen Boat Club).

Non-SCA members require a SCA day membership to cover insurance which costs £5.

Timings

Registration	09:30-11:00
Race briefing long course (riverside at Drumoak)	10:45
Long course start	11:00
Race briefing short course (riverside at Maryculter)	11:15
Short course start	11:30
Prize giving	14:15

Soup for the competitors at the finish in the Aberdeen Boat Club (included in the entry fee and available at the bar).

You can use the shower and changing room facilities at the Aberdeen Boat Club. Note that there are limited drains in the changing rooms, so we have been asked to remove wet gear outside – within reason!

Safety / Equipment

- All competitors must attend the briefing.
- **Buoyancy aids are compulsory for all paddlers** Helmets must be worn by all paddlers in closed cockpit boats.
- All boats must have sufficient buoyancy to support the boat and crew in the event of a capsize. Inherent buoyancy in composite boats is not sufficient to meet this requirement. Additional foam buoyancy or air bags must be fitted. Boats will be inspected before the race.
- Race organisers reserve the right to change the course in adverse weather or river conditions.

Questions?

If you have any questions about the 2018 Dee Marathon please contact Donald Thomson (donald.thomson@uwclub.net).

Directions

Maryculter:- Registration and Short-Course start

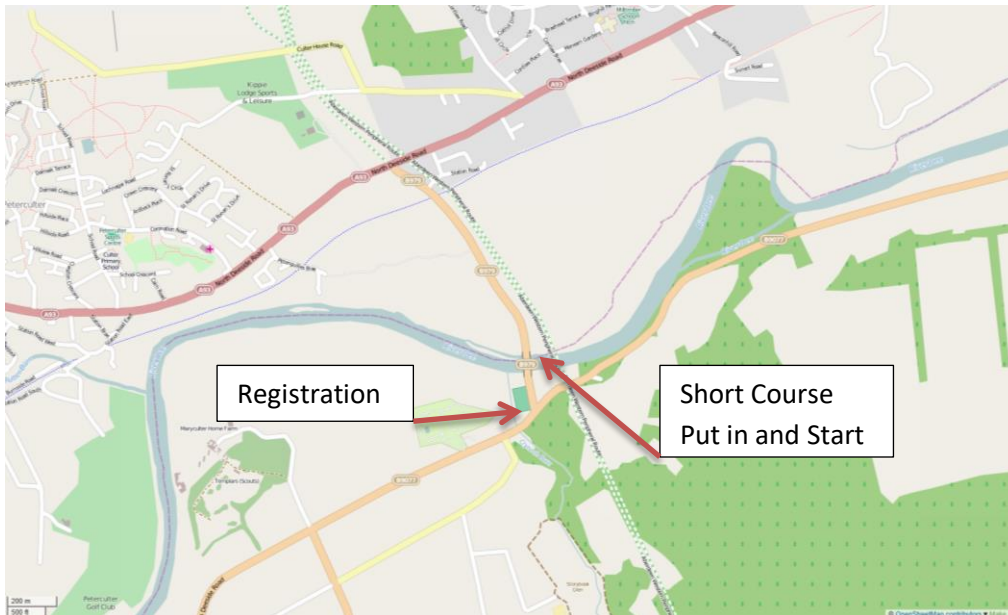
Football field on corner of N Deeside Road and Maryculter Bridge GR NJ 857002.

From South follow A90 towards Aberdeen and turn L onto South Deeside Road B9077, at roundabout at R Dee bridge on outskirts of Aberdeen.

From North follow A90 S over Anderson Drive. At roundabout on S side of R Dee bridge, turn R (last exit) onto B9077 S Deeside Road.

Follow B9077 for approx 5 miles. Shortly after road passes under new Aberdeen peripheral route, you will see the turning for B979 turning onto Maryculter Bridge. Stay on B9077 and

after approx 50m turn right into entrance for now closed Mill Inn. Parking and registration are on R next to football field.



Drumoak:- Long Course start

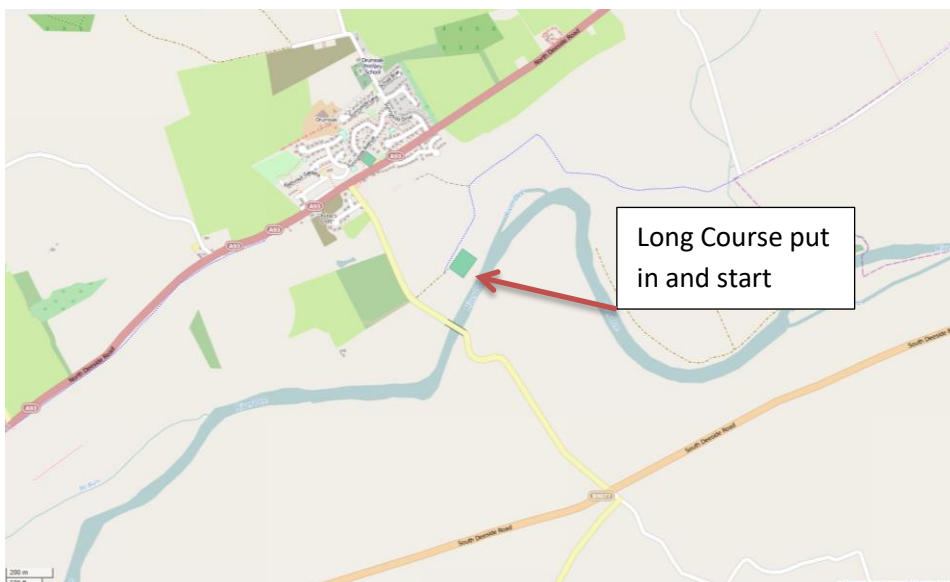
Drumoak, grass field north side of the river. GR NO 796 984

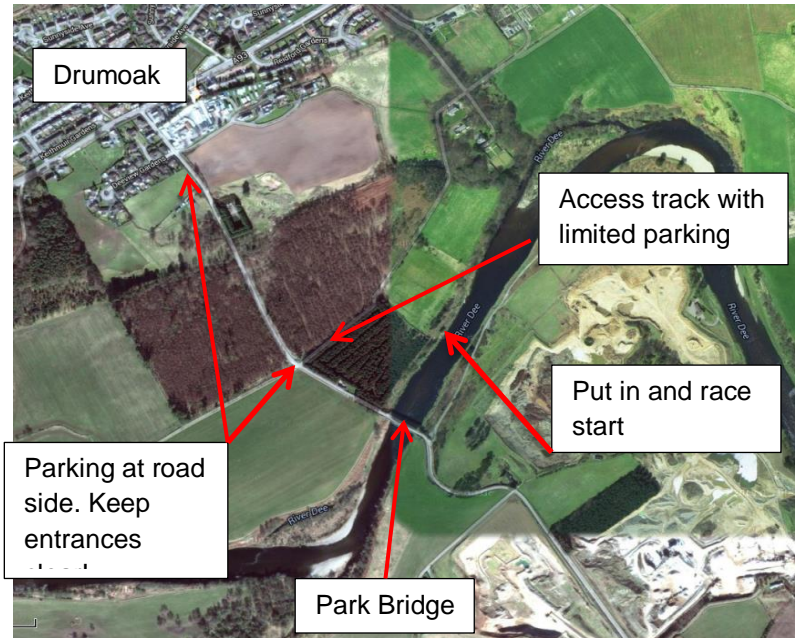
From Aberdeen, on South Deeside Road B9077, turn right at crossroad after signs for weak bridge / Drumoak, cross bridge, 200m after the bridge there is a single track road - park to unload boats.

From Aberdeen, on North Deeside Road A93, enter Drumoak, turn left directly after Irvine Arms bar / sign for Park Bridge, after 600m there is a single track road - park to unload boats.

Drumoak to Aberdeen is about 30 minutes drive via the South Deeside road.

Maryculter (Registration) to Long Course Start at Drumoak is 5 miles, approx 10 mins on S Deeside Road.





Aberdeen Boat Club:- Finish Long and Short Course and Prize giving

Aberdeen Boat Club
 South Esplanade W
 Aberdeen
 AB11 9AA
 01224 871074

From Registration or Long Course Start, retrace your route on B9077 to roundabout at R Dee bridge. Take 2nd exit onto Dual Carriageway parallel to river (football fields between road and river). At next roundabout turn L across river, then R at roundabout on N side. Follow river downstream to next roundabout, and turn R back across river. You will see boathouses on S bank as you cross. Turn L at far side of bridge onto South Esplanade W. ABC is the last of the 3 boathouses, approx. 200m from roundabout. Note this is a one way street, and parking restrictions do not apply on a Sunday (double yellow lines excepted)

